

NEMA PET Small Animal Phantom (NU 4-2008)[™]

Model PET/NEMA-SAVP

Main Features

- Designed in accordance with the recommendations by the National Electrical Manufacturers Association (NEMA) to standardize the measurements of performance of PET for animal imaging.*

Main Applications

- Hot Rod measurements indicative of spatial resolution
- Uniform region for evaluation of signal to noise ratio
- Uniformity for evaluation of attenuation and scatter correction performance

Specifications

Outside Diameter: ~ 33 mm

Cylinder Length: ~ 63 mm

Fillable Chamber Inside Diameter: ~ 30 mm

Fillable Chamber Length: ~ 1.5 mm

Sidewall Thickness: ~ 1.5 mm

Fillable Chamber Inside Diameter: ~ 8 mm

Fillable Chamber Inside Length: ~ 14 mm

Fillable Chamber Wall Thickness: ~ 1 mm

Hot Spot Dimensions

Length: ~ 20 mm

Diameters: 1, 2, 3, 4, and 5 mm

Shipping

Carton: 10" x 8" x 4"

Weight: 3lbs.

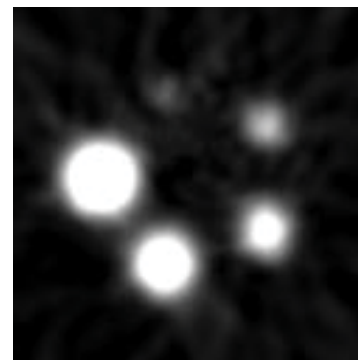
**Performance Measurements of Small Animal Positron Emission Tomographs, NEMA Standards Publications No. NU 4-2008 Section 6*



NEMA PET Small Animal Phantom (NU 4-2008)[™]



*Chambers of NEMA PET
Small Animal Phantom (NU 4-2008)[™]*



*Rods of NEMA PET
Small Animal Phantom (NU 4-2008)[™]*