

## Flangeless Esser PET Phantom™

Model PET/FL/P

PET phantom without protruding flange to simplify positioning

### Main Applications

- Evaluation of tumor detectability
- Evaluation of SUVs
- Acceptance testing
- Routine quality assurance and control
- Evaluation of reconstruction filters
- Evaluation of attenuation and scatter correction
- Research
- **ACR recommended phantom - MUST PROVIDE PETAP OR NMAP NUMBER FOR ACR ORDERS**

### Specifications of Cylinder

Cylinder inside diameter: ~ 209 mm

Cylinder inside height: ~ 186 mm

Cylinder wall thickness: ~ 6.4 mm

### Specifications of Insert

Rod diameters: 4.8, 6.4, 7.9, 9.5, 11.1 and 12.7 mm\*

Height of rods: 8.8 cm

Solid sphere diameters: 9.5, 12.7, 15.9, 19.1, 25.4 and 31.8 mm

Distance from sphere center to mounting surface:  
~ 127 mm

### Shipping

Carton: 13" x 13" x 13"

Weight: 10lbs.

*\*For more details see Cold Rod Inserts*



*Flangeless Esser PET Phantom™*

## Flangeless PET Lid Only

Model PET/FL/LID-ONLY

### Specifications

All clear material: PMMA

Refillable thin-walled cylinders size/volume:

8 mm/~1.9 mL; 12 mm/~4.3 mL;

16 mm/~7.7 mL; (3x) 25 mm/~18.7 mL

Solid cylinder (Teflon®): 25 mm

Cylinder height: ~ 38.1 mm

Volume with PET Lid & no insert: ~ 6.2 liters

**NOTE:** Above Lid can be made for Flanged or Flangeless Cylinder, call for details



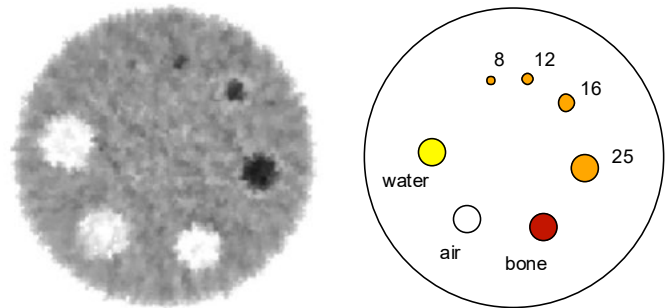
*Flangeless Esser PET Phantom Lid™*

## Flangeless Esser PET Phantom, with 2nd Deluxe ECT Lid™

Model PET/FL-X2/P

### Description

Includes above described Phantom with Flangeless Deluxe Jaszczak Lid. See Information Sheet on Flangeless Deluxe Jaszczak Phantom for complete description.



*Flangeless Deluxe Jaszczak Phantom™*