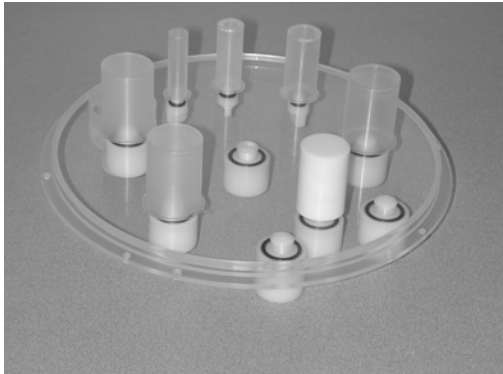


Flangeless Esser PET Phantom™

Flangeless Esser PET Phantom, with 2nd Deluxe

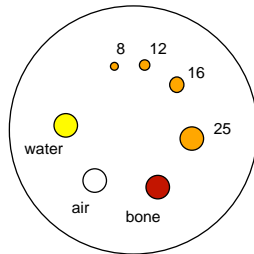
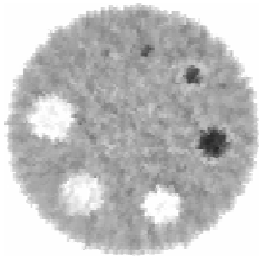
Flangeless Lid™



Flangeless Esser PET Phantom Lid™



Flangeless Esser PET Phantom™



Flangeless Deluxe Jaszczak Phantom™

Flangeless Esser PET Phantom™

Model PET/FL/P

Model PET/LID/REG (lid only Flanged)

Model PET/LID/FL (lid only Flangeless)

Main Features:

- PET phantom without protruding flange
- This phantom includes components Dr. Peter D. Esser adapted from the Deluxe Jaszczak Phantom

Main Applications:

- Evaluation of tumor detectability
- Evaluation of SUVs
- Acceptance testing
- Routine quality assurance and control
- Evaluation of reconstruction filters
- Evaluation of attenuation and scatter correction
- Research
- ACR recommended phantom

MUST PROVIDE NMAP NUMBER, ADD ACR in front of Model Number

Specifications of Cylinder:

Cylinder inside diameter: 20.4 cm

Cylinder inside height: 18.6 cm

Cylinder wall thickness: 6.4 mm

Specifications of Insert:

Rod diameters: 4.8, 6.4, 7.9, 9.5, 11.1 and 12.7 mm

Height of rods: 8.8 cm

Solid sphere diameters: 9.5, 12.7, 15.9, 19.1, 25.4 and 31.8 mm

Height of center of spheres from base plate: 12.7 cm

Specifications of PET Lid:

Refillable thin-walled cylinders: 8, 12, 16, 25 (x3) mm

Solid cylinder (Teflon®): 25 mm

Cylinder height: 1.5 in

NOTE: Above Lid can be made for Flanged or Flangeless Cylinder, call for details.

Flangeless Esser PET Phantom, with 2nd Deluxe Flangeless Lid™

Model PET/FL-X2/P

Includes above described Phantom with Flangeless Deluxe Jaszczak Lid, see Information Sheet on Flangeless Deluxe Jaszczak Phantom for complete description