

Flangeless Deluxe Jaszczak Phantom™



Flangeless Deluxe Jaszczak Phantom™

Flangeless Deluxe Jaszczak Phantom™

Model ECT/FL-DLX/P

Main Features:

- Deluxe ECT phantom without protruding flange

Main Applications:

- For use with high spatial resolution SPECT and PET systems
- System performance evaluation (collimator, artifacts, calibration, reconstruction parameters)
- Acceptance testing
- Routine quality assurance and control
- Evaluation of center-of-rotation error
- Evaluation of non-uniformity artifact
- Evaluation of changes of radius-of-rotation on spatial resolution
- Evaluation of reconstruction filters on spatial resolution
- Evaluation of attenuation and scatter compensation
- Research
- ACR recommended phantom

Specifications of Cylinder:

Cylinder inside diameter: 20.4 cm

Cylinder inside height: 18.6 cm

Cylinder wall thickness: 6.4 mm

Specifications of Insert and Spheres:

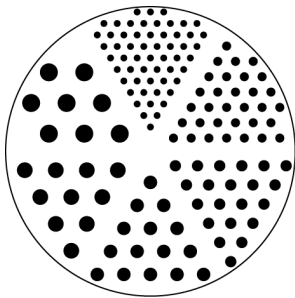
Rod diameters: 4.8, 6.4, 7.9, 9.5, 11.1 and 12.7 mm

Height of rods: 8.8 cm

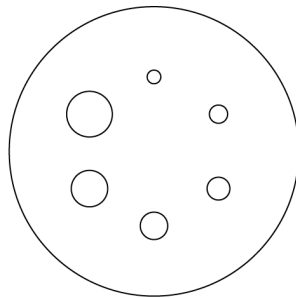
Solid sphere diameters: 9.5, 12.7, 15.9, 19.1, 25.4 and 31.8 mm

Height of center of spheres from base plate: 12.7 cm

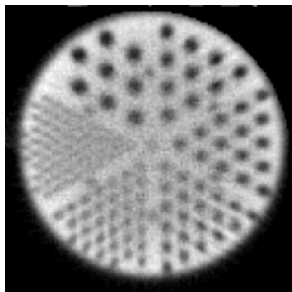
Cold Rods



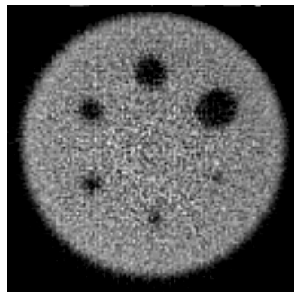
Cold Spheres



Flangeless Deluxe



Cold Rods



Cold Spheres

The images were obtained with the Flangeless Deluxe Jaszczak Phantom™