

Mini and Micro Deluxe Phantom™ & Hot Spot Inserts



Components of Mini Deluxe Phantom™

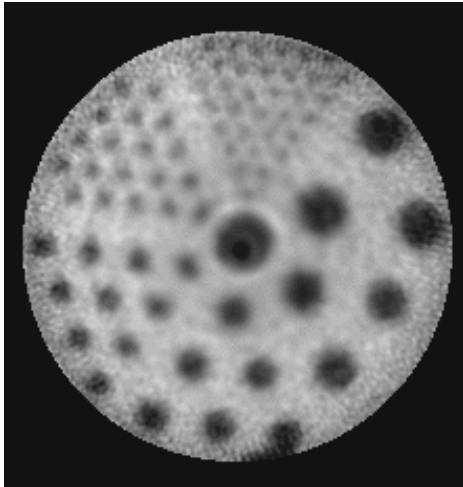


Image of Mini Deluxe SPECT Cold Rod Phantom™

Mini & Micro Hot Spot Insert™

Model ECT/HOT-MP/I & ECT/HOT-MMP/I

Main Applications:

- Model ECT/HOT-MP/I is designed for use with 7.6 cm inside diameter mini cylinder
- Model ECT/HOT-MMP/I is designed for use with the 4.4 micro cylinder

Specifications:

All clear material: PMMA

Diameter of insert:

Model ECT/HOT-MP/I: 7.5 cm

Model ECT/HOT-MMP/I: 4.3 cm

Inside height: 4.3 cm

Diameters of hollow channels: 1.2, 1.6, 2.4, 3.2, 4.0, and 4.8 mm

Center-to-center spacing of channels: Two times the

diameter

Mini Deluxe Phantom™

Model ECT/DLX/MP

Main Applications:

- Small animal system evaluation (with field-of-view greater than 77 mm)
- Evaluation of ultra-high resolution ECT systems (less than or equal to 3 mm FWHM)
- Spatial resolution measurements
- Evaluation of center-of-rotation error
- Research

Specifications:

All clear material: PMMA

Rod diameters: 1.2, 1.6, 2.4, 3.2, 4.0 and 4.8 mm

Height of rods: 3.4 cm

Insert diameter: 7.5 cm

Cylinder outside diameter: 8.3 cm

Cylinder inside diameter: 7.6 cm

Cylinder inside height: 3.8 cm

Micro Deluxe Phantom™

Model ECT/DLX/MMP

Main Applications:

- Small animal system evaluation (with field-of-view greater than 45 mm)
- Evaluation of ultra-high resolution ECT systems (less than or equal to 3 mm FWHM)
- Spatial resolution measurements
- Evaluation of center-of-rotation error
- Research

Specifications:

All clear material: PMMA

Rod diameters: 1.2, 1.6, 2.4, 3.2, 4.0 and 4.8 mm

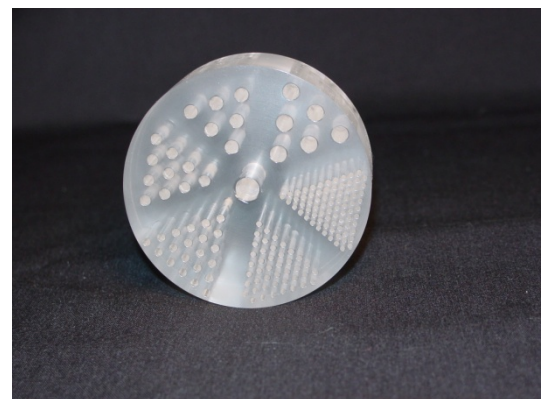
Height of rods: 3.4 cm

Insert diameter: 4.4 cm

Cylinder outside diameter: 5 cm

Cylinder inside diameter: 4.5 cm

Cylinder inside height: 6.3 cm



Mini Hot Spot Insert™