

NEMA PET Phantom™

NEMA PET Phantom™

Model PET/NEMA94/P

Main Features:

- The NEMA PET Phantom™ (NU2-1994) is designed in accordance with the recommendations by the National Electrical Manufacturers Association (NEMA) to standardize the measurement of performance of PET*

Main Applications:

- PET acceptance testing with NEMA standard
- Evaluation of count rate, uniformity, scatter fraction, attenuation compensation, and scatter compensation of ECT systems
- Research

Specifications:

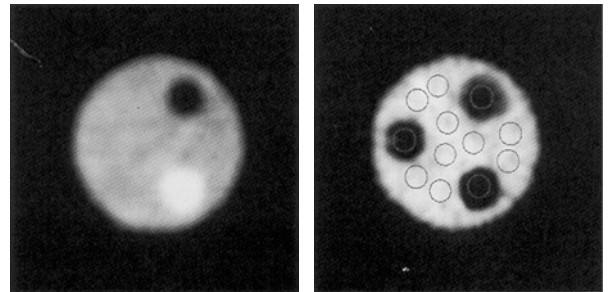
Cylinder outside diameter: 20.3 cm
Cylinder inside diameter: 19.7 cm
Wall thickness: 3 mm
Delrin Insert diameter: 5 cm
Fillable Insert inside diameter: 4.3cm
Fillable Insert height: 18.3 cm
Fillable Insert volume: ~ 260 mL
Line Source diameter: ~ 1 mm
Line Source height: 1.4 cm

- * Karp JS, Daube-Witherspoon ME, Hoffman EJ et al. Performance standards in positron emission tomography, J Nucl Med, 32:2342-2350.

- * *Performance Measurements of Positron Emission Tomographs*, NEMA Standards Publication NU2, National Electrical Manufacturers Association (NEMA), Washington, D.C., 1994.



NEMA PET Phantom™



*Attenuation Correction Test
Shown are attenuation image (left) with three inserts
and emission image (right) after attenuation correction
(with region-of-interest shown for data analysis).*

