

Data Spectrum Corporation

A Worldwide Leader in Medical Imaging Phantoms™

ACR Recommended Phantoms

ACR Flangeless Deluxe Jaszczak Phantom™



*ACR Flangeless Deluxe Jaszczak Phantom™
ACR ECT/FL-DLX/P*

ACR Flangeless Deluxe Jaszczak Phantom™

Model ACR ECT/FL-DLX/P

Main Features:

- Deluxe ECT phantom without protruding flange

Main Applications:

- For use with high spatial resolution SPECT and PET systems
- System performance evaluation (collimator, artifacts, calibration, reconstruction parameters)
- Acceptance testing
- Routine quality assurance and control
- Evaluation of center-of-rotation error
- Evaluation of non-uniformity artifact
- Evaluation of changes of radius-of-rotation on spatial resolution
- Evaluation of reconstruction filters on spatial resolution
- Evaluation of attenuation and scatter compensation
- Research
- Required for ACR SPECT accreditation

Specifications of Cylinder:

Cylinder inside diameter: 20.4 cm

Cylinder inside height: 18.6 cm

Cylinder wall thickness: 6.4 mm

Specifications of Insert and Spheres:

Rod diameters: 4.8, 6.4, 7.9, 9.5, 11.1 and 12.7 mm

Height of rods: 8.8 cm

Solid sphere diameters: 9.5, 12.7, 15.9, 19.1, 25.4 and 31.8 mm

Height of center of spheres from base plate: 12.7 cm

For information about ACR accreditation contact:

American College of Radiology

Carolyn Richards McFarlane

1891 Preston White Drive

Reston, VA 20191

T: +1 (800) 227-5463 x4563 F: +1 (703) 295-6776

Email: carolynr@acr.org

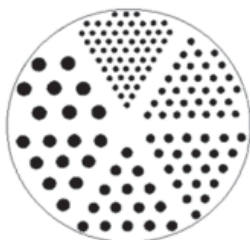
For further information please contact us at:

437 Dimmocks Mill Road

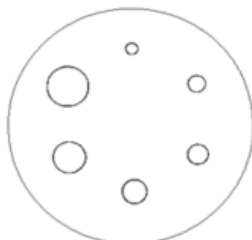
Hillsborough, NC 27278-2300

T: +1 (919) 732-6800 F: +1 (919) 732-2260

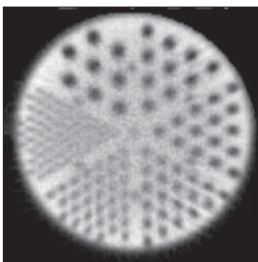
Email: info@spect.com Web: www.spect.com



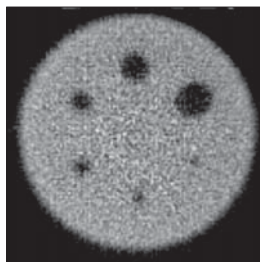
Cold Rods



Cold Spheres



Cold Rods

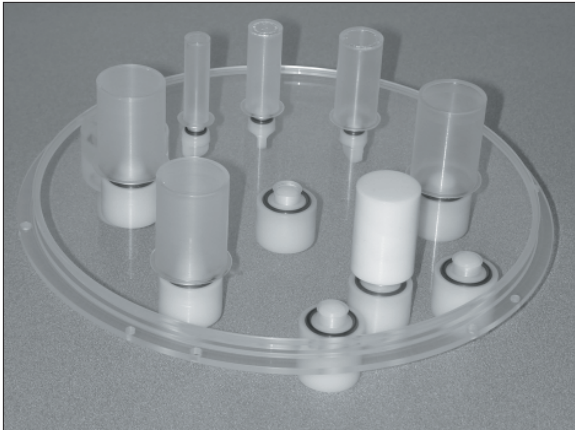


Cold Spheres

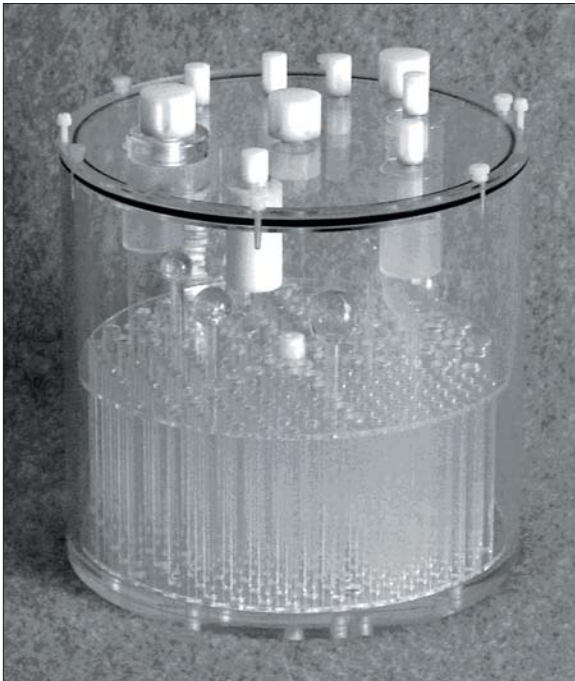
The images were obtained with the ACR Flangeless Deluxe Jaszczak Phantom™

ACR Flangeless PET Phantom™

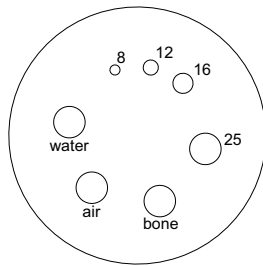
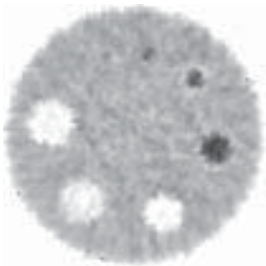
ACR Flangeless PET Phantom, with 2nd Deluxe Flangeless Lid™



ACR Flangeless PET Phantom Lid™
ACR PET/LID/FL



ACR Flangeless PET Phantom™
ACR PET/FL/P



ACR Flangeless PET Phantom™

Model 0ACR PET/FL/P

Also:

Model ACR PET/LID/REG (lid only Flanged)

Model ACR PET/LID/FL (lid only Flangeless)

Main Features:

- PET phantom without protruding flange

Main Applications:

- Evaluation of tumor detectability
- Evaluation of SUVs
- Acceptance testing
- Routine quality assurance and control
- Evaluation of reconstruction filters
- Evaluation of attenuation and scatter correction
- Research
- Required for ACR PET accreditation

Specifications of Cylinder:

Cylinder inside diameter: 20.4 cm

Cylinder inside height: 18.6 cm

Cylinder wall thickness: 6.4 mm

Specifications of Insert:

Rod diameters: 4.8, 6.4, 7.9, 9.5, 11.1 and 12.7 mm

Height of rods: 8.8 cm

Solid sphere diameters: 9.5, 12.7, 15.9, 19.1, 25.4 and 31.8 mm

Height of center of spheres from base plate: 12.7 cm

Specifications of PET Lid:

Refillable thin-walled cylinders: 8, 12, 16, 25 (x3) mm

Solid cylinder (Teflon®): 25 mm

Cylinder height: 1.5 in

NOTE: Above Lid can be made for Flanged or Flangeless Cylinder; call for details.

Flangeless PET Phantom, with 2nd Deluxe Flangeless Lid™

Model PET/FL-X2/P

Includes above described Phantom with Flangeless Deluxe Jaszczak Lid, see other side of this sheet for complete description.