

Flanged Jaszczak ECT Phantoms

Main Features

- ECT phantoms with protruding flanged top and with 3.2 mm cylinder wall thickness, for reduced attenuation

Main Applications

- For use with SPECT and PET systems
- System performance evaluation (collimator, artifacts, calibration, reconstruction parameters)
- Acceptance testing
- Routine quality, assurance and control
- Evaluation of center-of-rotation error
- Evaluation of non-uniformity artifact
- Evaluation of changes of radius-of-rotation on spatial resolution
- Evaluation of reconstruction filters on spatial resolution
- Evaluation of attenuation and scatter compensation
- Research

Specifications of Cylinder

All clear material: PMMA
 Cylinder inside diameter: ~ 216 mm
 Cylinder inside height: ~ 186 mm
 Cylinder wall thickness: ~ 3.2 mm
 Volume empty: ~ 6.8 liters
 Volume with Cold Rod Insert: ~ 5.7 liters
 Spheres make no significant change in volume

Specifications of Insert

All clear material: PMMA
 Rod diameters: Vary with insert, see next page
 Height of rods: ~ 88 mm
 Solid sphere diameters: Vary with insert, see next page
 Distance from sphere center to mounting surface: ~ 127 mm

Shipping

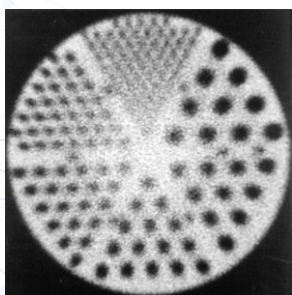
Carton: 13" x 13" x 13" Weight: 10lbs.



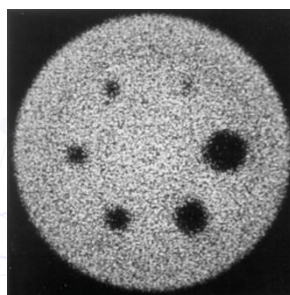
Components of Deluxe Jaszczak Phantom™



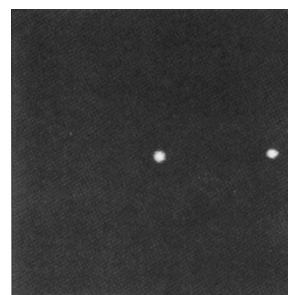
*Deluxe Jaszczak Phantom™
(See next page for available models)*



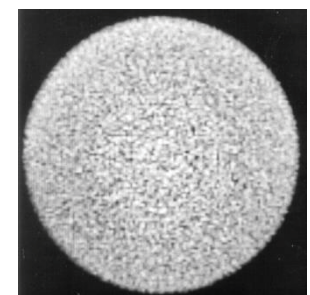
Cold Rods



Cold Spheres



Line Sources



Uniform

(The images were obtained with the Deluxe Jaszczak Phantom™ Model ECT/DLX/P)

Glass capillary tubes (user supplied) with 120 mm length may be positioned without removing top cover plate as a result of a unique design of filler caps, one on axis, one 86 mm from axis-of-rotation

Ultra Deluxe Jaszczak Phantom™

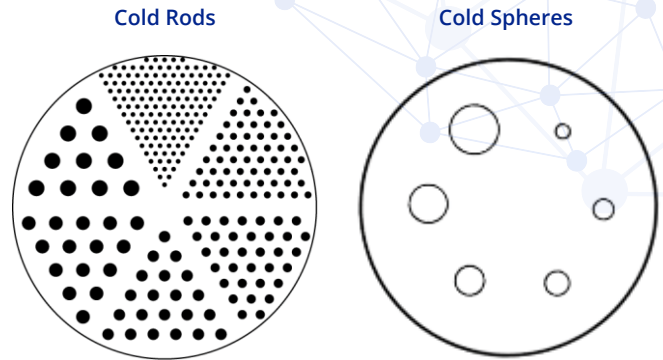
Model ECT/UL-DLX/P

- For use with ultra-high spatial resolution SPECT and PET systems.

Specifications

Rod diameters: 3.2, 4.8, 6.4, 7.9, 9.5 and 11.1 mm

Solid sphere diameters: 9.5, 12.7, 15.9, 19.1, 25.4, and 31.8 mm



Ultra Deluxe

Deluxe Jaszczak Phantom™

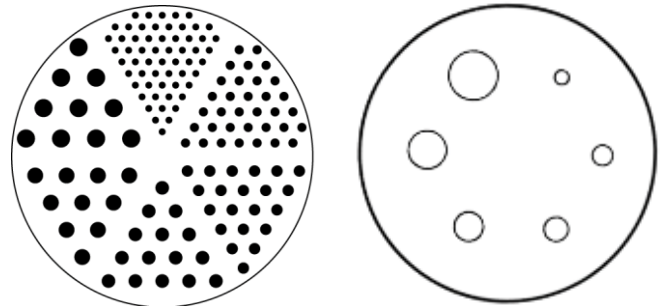
Model ECT/DLX/P

- For use with high to very high spatial resolution SPECT and PET systems.

Specifications

Rod diameters: 4.8, 6.4, 7.9, 9.5, 11.1 and 12.7 mm

Solid sphere diameters: 9.5, 12.7, 15.9, 19.1, 25.4, and 31.8 mm



Deluxe

Standard Jaszczak Phantom™

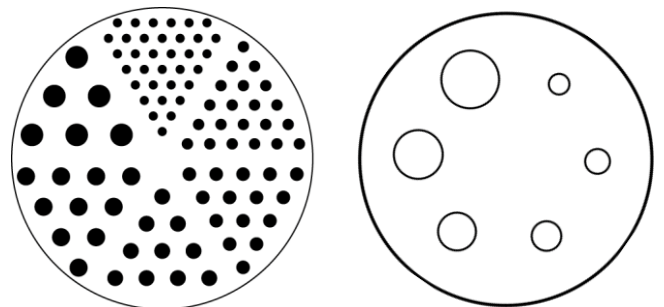
Model ECT/STD/P

- For use with medium to high spatial resolution SPECT and PET systems.

Specifications

Rod diameters: 6.4, 7.9, 9.5, 11.1, 12.7 and 19.1 mm

Solid sphere diameters: 12.7, 15.9, 19.1, 25.4, 31.8, and 38.1 mm



Standard

Benchmark Jaszczak Phantom™

Model ECT/BEN/P

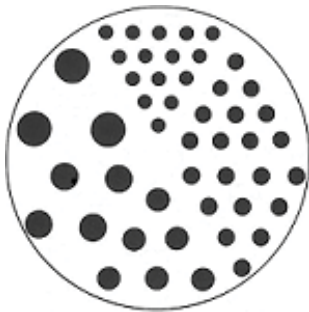
- For use with ECT systems with poorer spatial resolution, larger radius-of-rotation, low cut-off reconstruction filters and count densities mimicking clinical scans.

Specifications

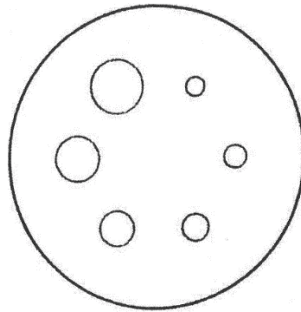
Rod diameters: 9.5, 11.1, 12.7, 15.9, 19.1 and 25.4 mm

Solid sphere diameters: 12.7, 15.9, 19.1, 25.4, 31.8, and 38.1 mm

Cold Rods



Cold Spheres



Benchmark

**For more details on just insert see
Cold Rod Inserts**